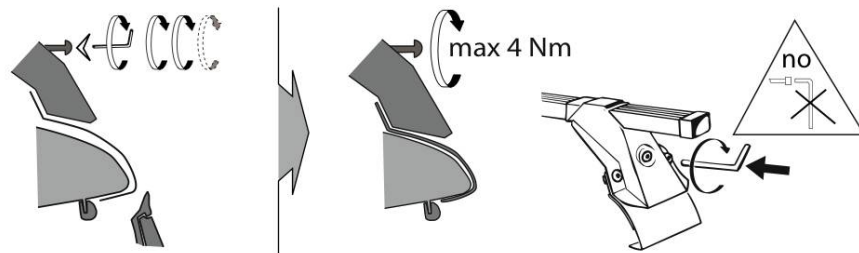
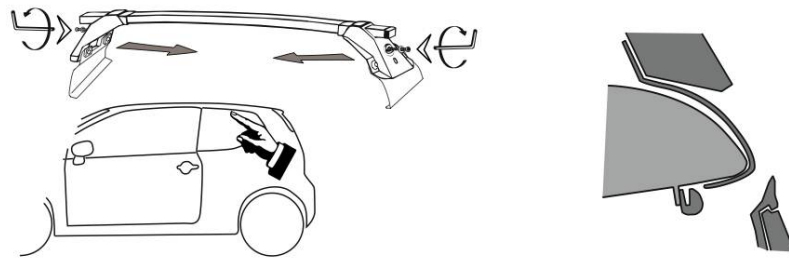
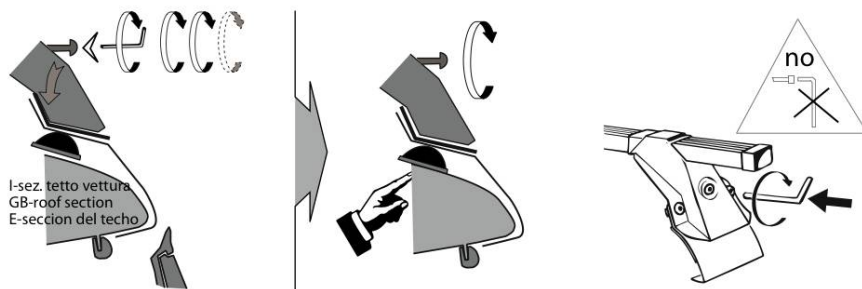
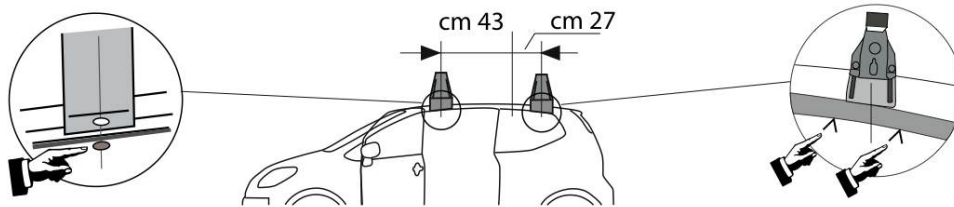


L1320
 SEAT Mii 3 porte 2012
 ŠKODA Citygo 3 porte 2012
 VOLKSWAGEN up! 3 porte 2012

Patent pending



LA PREALPINA srl

INDUSTRIA ACCESSORI AUTO
 10040 VOLVERA (Torino) ITALY
 Strada Orbassano, 47
 tel. 011 985 06 83, Fax 011 985 72 76
<http://www.laprealpina.net>; e-mail: lp@laprealpina.it

04/11/2014
 Rev. 3